

FIREWALL and HEALTH

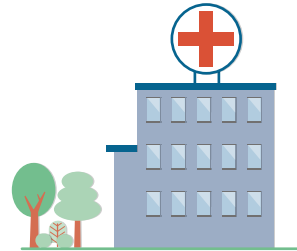
# Creating safe spaces, addressing health inequalities





# HOW CAN WE SOLVE THIS?

## HEALTH CARE SECTOR



Care is provided based on need, not immigration status.



Health care practitioners pursue **medical ethics**, and are not coopted for immigration enforcement.

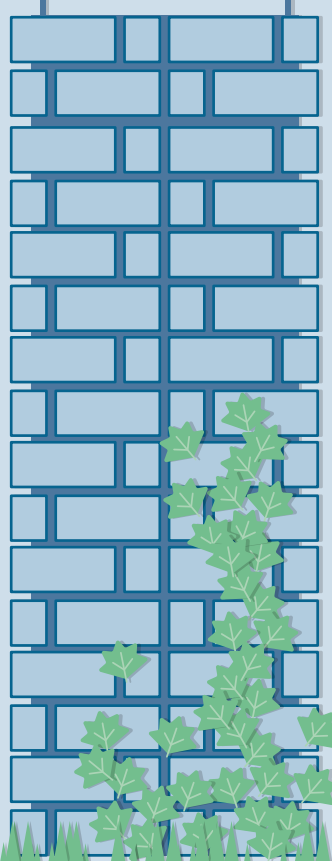


Patient data is not shared with migration authorities without consent.



All patients feel safe to seek health care.

## THE FIREWALL: Clear separation of roles



## MIGRATION AUTHORITIES



Authorities are trained to respect the firewall.



Immigration enforcement does **not interfere with** access to health care.



Safe spaces are respected.



Health professionals' **independence** and patients' **privacy** upheld.



# WHAT CAN WE ACHIEVE?

...for everyone's benefit



Upholding  
medical  
ethics

Addressing  
health  
inequalities

Advancing public  
health goals,  
including prevention

Promoting  
more efficient  
health systems

Respecting  
human  
rights

Fairer  
migration  
governance

Resisting  
racism  
& discrimination

# LEARN AND SHARE



Find out how the  
'firewall' works in  
practice, and what  
you can do

**WWW.PICUM.ORG**



+32 2 210 17 80



info@picum.org

Rue du Congrès /  
Congresstraat 37-41,  
post box 5  
1000 Brussels Belgium



@PICUM\_post



facebook.com/picum.org



## PICUM.ORG/FIREWALL



With support from:



SIGRID RAUSING TRUST



With financial support from the European Union Programme for Employment and Social Innovation "EaSI" (2014-2020). For further information please consult: <http://ec.europa.eu/social/easi>. The information contained in this publication does not necessarily reflect the official position of the European Commission.